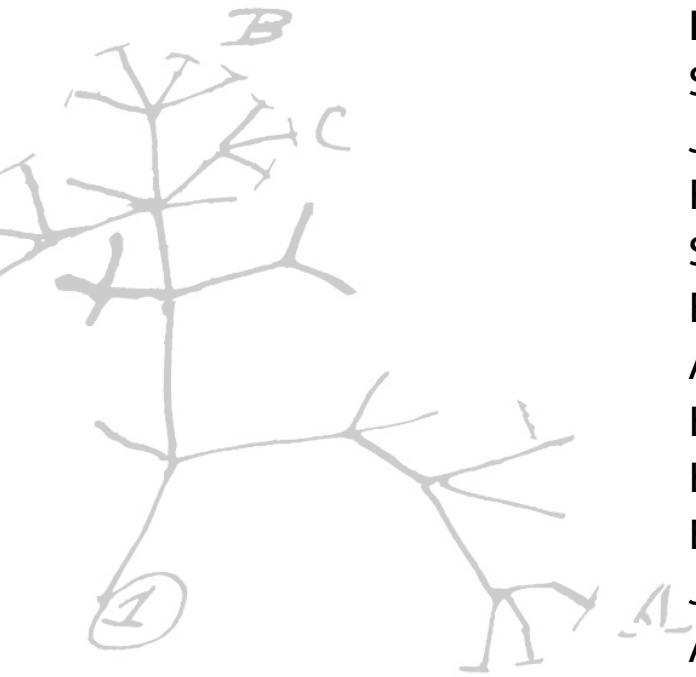


Advanced Biology Course — Epidemiology

Keywords: evolution | bioinformatics | microbes | genomics | public health | modelling | surveillance | immunology | ecology | sequencing | statistics

I think

Phylodynamics



Instructors:

Samuel Alizon (CNRS, Paris) – coord.

Joëlle Barido-Sottani (CNRS, Paris)

François Blanquart (CIRB, Paris)

Sebastian Duchène (Institut Pasteur, Paris)

Emma Hodcroft (Swiss TPH, Basel)

Amaury Lambert (ENS, Paris)

Katrina Lythgoe (Oxford University)

Hélène Morlon (CNRS, Paris)

Étienne Simon-Lorière (Institut Pasteur, Paris)

Julien Thézé (INRAE, Clermont Ferrand)

Anna Zhukova (Institut Pasteur, Paris)

2024 Advanced Biology Course in Epidemiology: Focus on Phylodynamics

(PSL Graduate Program in Life Sciences, for M1, M2 & PhD candidates)

Sept 11 to Dec 18, 2024 (Wednesdays, 17h15 to 19h30)

at CIRB, Collège de France, 11 pl. Marcelin Berthelot, 75005 Paris



Registration (before Aug. 2024)

and enquiries:

bofei.ma@bio.ens.psl.eu